

SURVEY PLAN

DIAGRAM A

3 (Pt)
SEE SHEET 3

Emt DJ
SP318122

Scale 1 : 2500

For details of Lots
1484-1497 & 1500-1507
See Sheet 8.

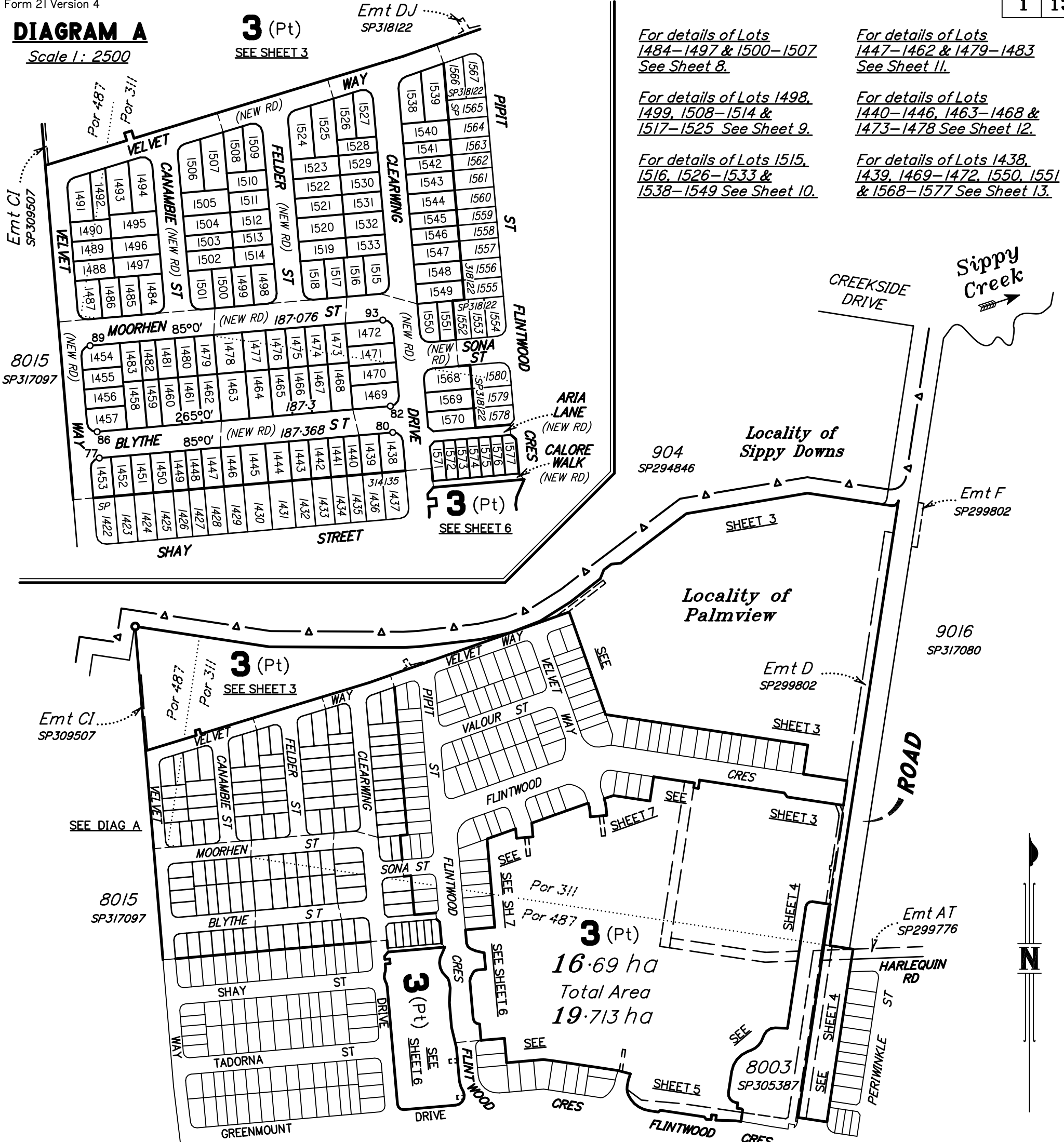
For details of Lots
1447-1462 & 1479-1483
See Sheet 11.

For details of Lots 1498,
1499, 1508-1514 &
1517-1525 See Sheet 9.

For details of Lots
1440-1446, 1463-1468 &
1473-1478 See Sheet 12.

For details of Lots 1515,
1516, 1526-1533 &
1538-1549 See Sheet 10.

For details of Lots 1438,
1439, 1469-1472, 1550, 1551
& 1568-1577 See Sheet 13.



Total Area of New Road

(SEE SHEETS 8 - 13) 2.1684 ha

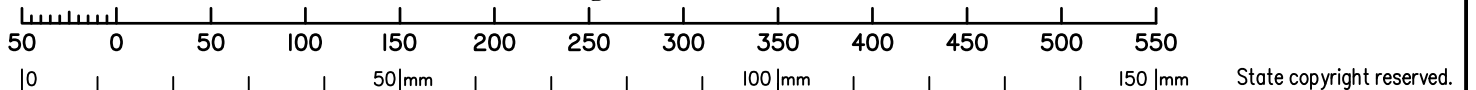
ADDITIONAL REFERENCE MARKS
TO BE PLACED FOLLOWING ROAD
CONSTRUCTION (SEE IS289826).

Original information compiled from
SP318122 in the Department of Natural
Resources, Mines & Energy.

Peg placed at all new corners, unless
otherwise stated.

For Reference Marks & MGA
Coordinates Tables See Sheet 5.

Scale 1:4000 - Lengths are in Metres.



RPS Australia East Pty Ltd (ACN 140 292 762) hereby certify that the land comprised in this plan was surveyed by the corporation, by Joel David McMAHON, Surveying Associate, for whose work the corporation accepts responsibility, under the supervision of Andrew Raymond CRIDLAND, Cadastral Surveyor and that the plan is accurate, that the said survey was performed in accordance with the Survey and Mapping Infrastructure Act 2003 and Surveyors Act 2003 and associated Regulations and Standards and that the said survey was completed on

.....
Authorised Delegate

.....
Date

Plan of
Lots 3, 1438-1533, 1538-1551 & 1568-1577
Cancelling Lot 3 on SP318122

LOCAL **SUNSHINE COAST**
GOVERNMENT: **REGIONAL COUNCIL** LOCALITY: **PALMVIEW**

Meridian: **MGA (Zone 56) Vide GNSS** Survey Records: **No**

Scale: **1:4000**
Format: **STANDARD**

SP319461