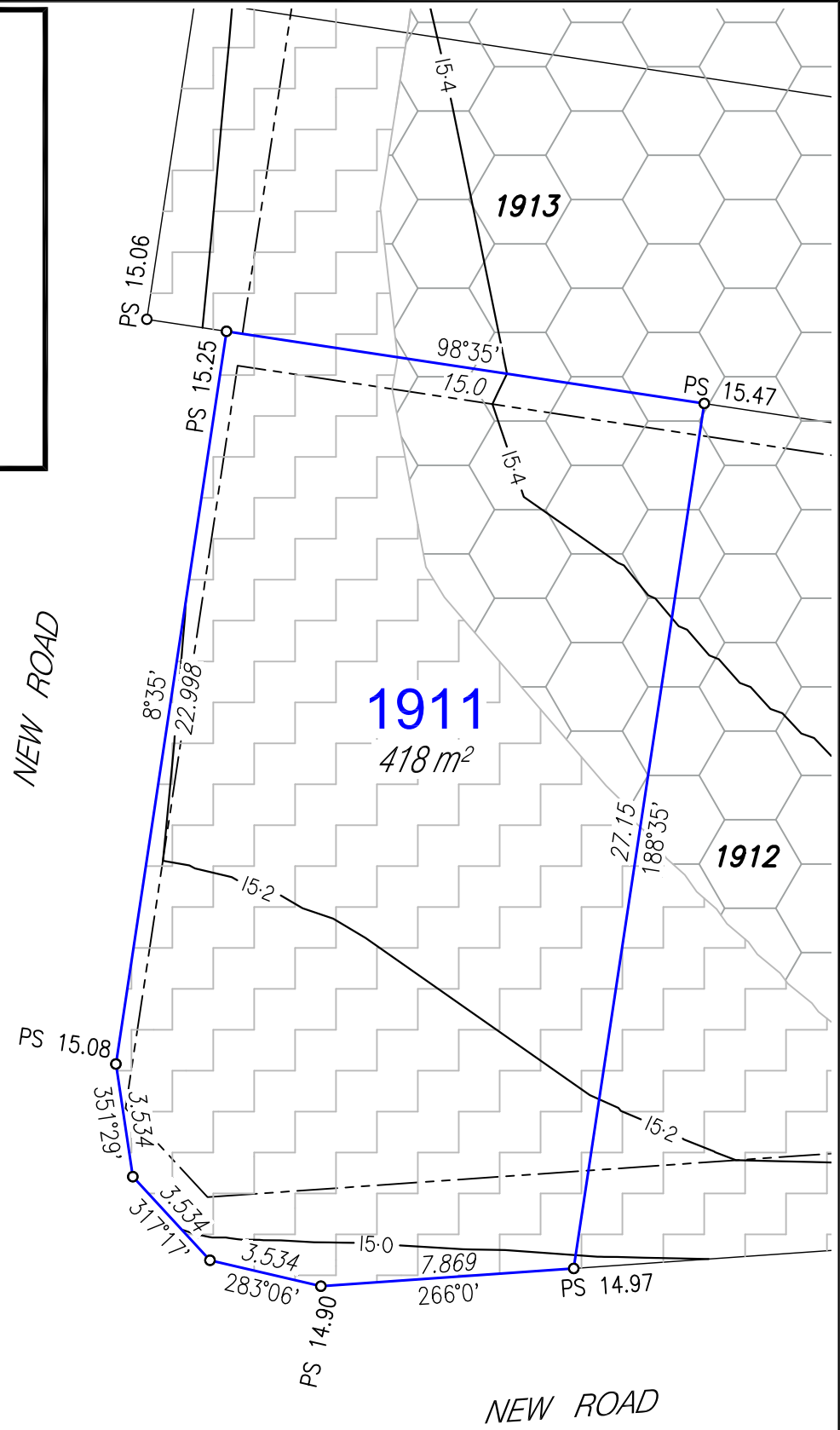



- NOTES:**
- Areas and Dimensions are subject to survey plan registration.
 - Proposed contours, Fill & Final surface level information is as specified on Preliminary Design information prepared by Calibre Consulting Engineers. (File:Release 17 Design Tin.12daz) received on 9/12/2020.
 - The compaction of the fill will be done in accordance with Australian Standard AS3798-2007 *Guidelines on earthworks for commercial and residential developments* to Level 1 inspection and testing and the frequency of field density testing will be in accordance with Table 8.1 of AS3798-2007.
 - Levels shown are referenced to the Australian Height Datum (AHD).
 - This plan was prepared to satisfy Section 11 of the Land Sales Act 1984.
 - Builders should not build off the design levels shown; a site survey is required.
 - These notes are an integral part of this plan.



Disclosure Plan

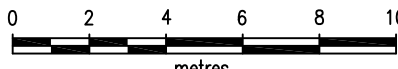
For Proposed Lot 1911
Harmony - Release 17
Currently Described as Part of Lot 9016
on SP317080
Locality: Palmview
Local Gov: S.C.R.C.

(to be shown on SP322782)




RPS Australia East Pty Ltd
ACN 140 292 762
ABN 44 140 292 762
1 Innovation Parkway, Birtinya, Qld, 4575
PO BOX 6149, Meridan Plains, Qld, 4551
T 07 5436 7888
F 07 5493 6630
W rpsgroup.com

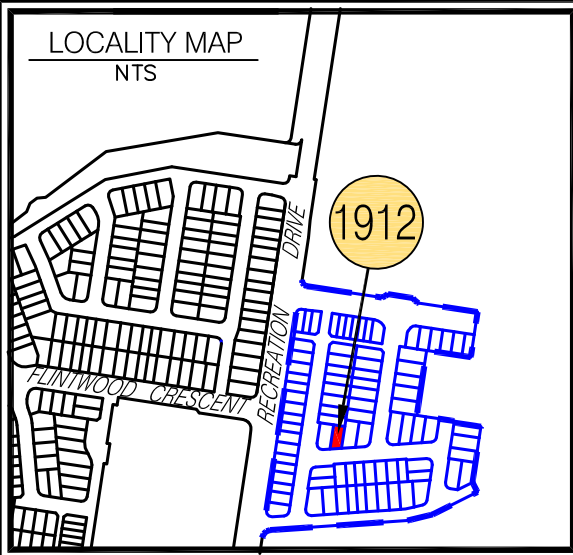
© COPYRIGHT PROTECTS THIS PLAN
Unauthorised reproduction or amendment
not permitted. Please contact the author.



SCALE 1:200 IS APPLICABLE ONLY
TO THE ORIGINAL SHEET SIZE. (A4)



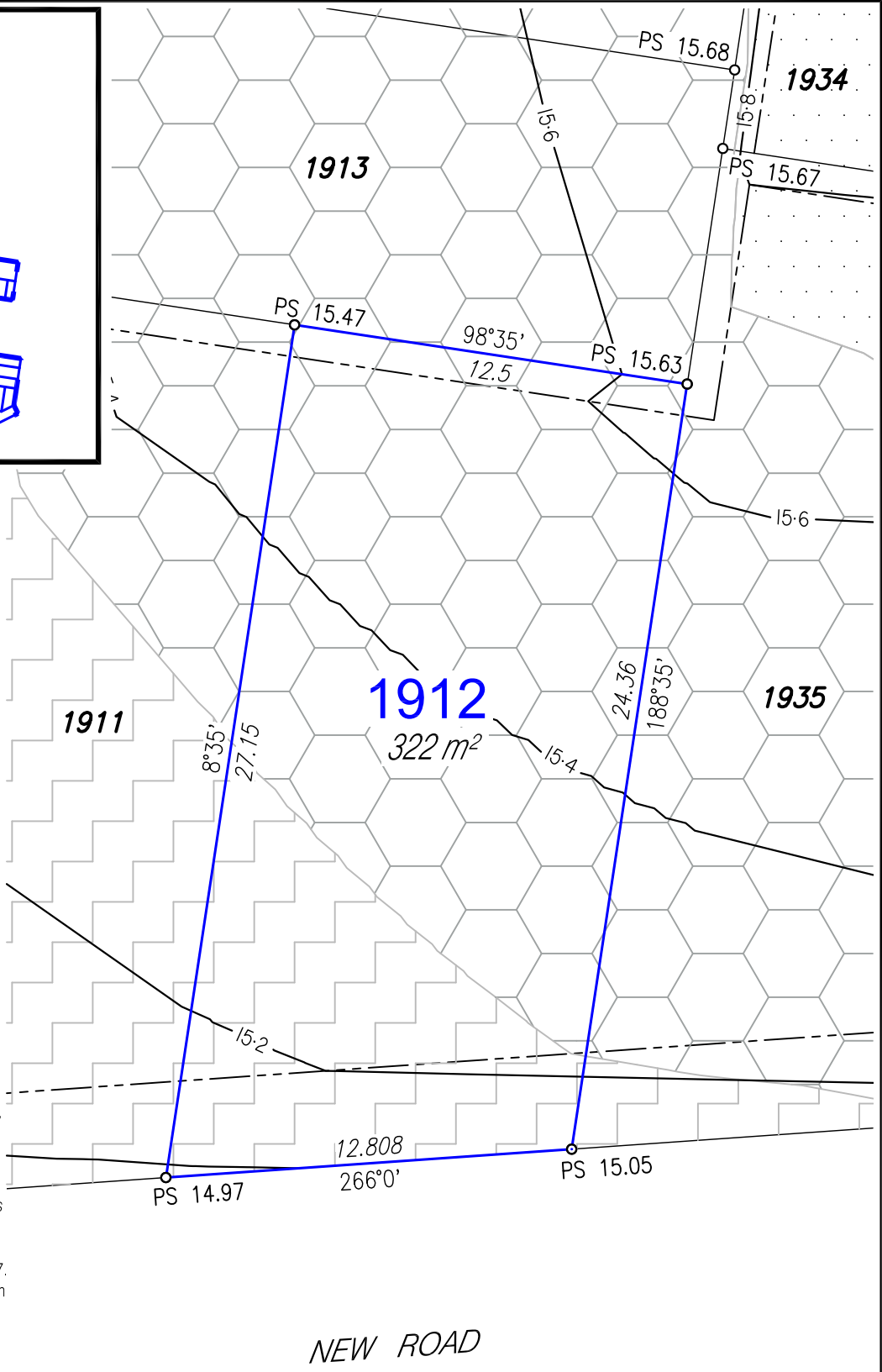
Drawn: MDB	Date: 11/12/2020
Dwg No: 107461-117.dwg	
Cadastral Surveyor : <i>ARC</i> (Authorised Delegate)	
Amended:	
Plan No:	Rev :
107461-117 L1911	



LEGEND

- Proposed Lot
- - - Proposed Easement
- Depth of Fill 0.0m-0.5m
- Depth of Fill 0.5m-1.0m
- Depth of Fill 1.0m-1.5m
- Depth of Fill 1.5m-2.0m
- Depth of Fill 2.0m-2.5m
- Depth of Fill 2.5m-3.0m
- Depth of Fill 3.0m-3.5m
- PS X.XX Proposed Surface Levels
- - - Proposed Batter
- Final Surface Contour (0.2m interval)


- NOTES:**
- Areas and Dimensions are subject to survey plan registration.
 - Proposed contours, Fill & Final surface level information is as specified on Preliminary Design information prepared by Calibre Consulting Engineers. (File:Release 17 Design Tin.12daz) received on 9/12/2020.
 - The compaction of the fill will be done in accordance with Australian Standard AS3798-2007 *Guidelines on earthworks for commercial and residential developments* to Level 1 inspection and testing and the frequency of field density testing will be in accordance with Table 8.1 of AS3798-2007.
 - Levels shown are referenced to the Australian Height Datum (AHD).
 - This plan was prepared to satisfy Section 11 of the Land Sales Act 1984.
 - Builders should not build off the design levels shown; a site survey is required.
 - These notes are an integral part of this plan.



NEW ROAD

Disclosure Plan

For Proposed Lot 1912
 Harmony - Release 17
 Currently Described as Part of Lot 9016
 on SP317080
 Locality: Palmview
 Local Gov: S.C.R.C.
 (to be shown on SP322782)




RPS Australia East Pty Ltd
 ACN 140 292 762
 ABN 44 140 292 762
 1 Innovation Parkway, Birtinya, Qld, 4575
 PO BOX 6149, Meridan Plains, Qld, 4551
 T 07 5436 7888
 F 07 5493 6630
 W rpsgroup.com

© COPYRIGHT PROTECTS THIS PLAN
 Unauthorised reproduction or amendment
 not permitted. Please contact the author.

0 2 4 6 8 10
 metres

SCALE 1:200 IS APPLICABLE ONLY
 TO THE ORIGINAL SHEET SIZE. (A4)



Drawn: MDB	Date: 11/12/2020
Dwg No: 107461-117.dwg	
Cadastral Surveyor : <i>ARC</i> (Authorised Delegate)	
Amended:	
Plan No:	Rev :
107461-117 L1912	