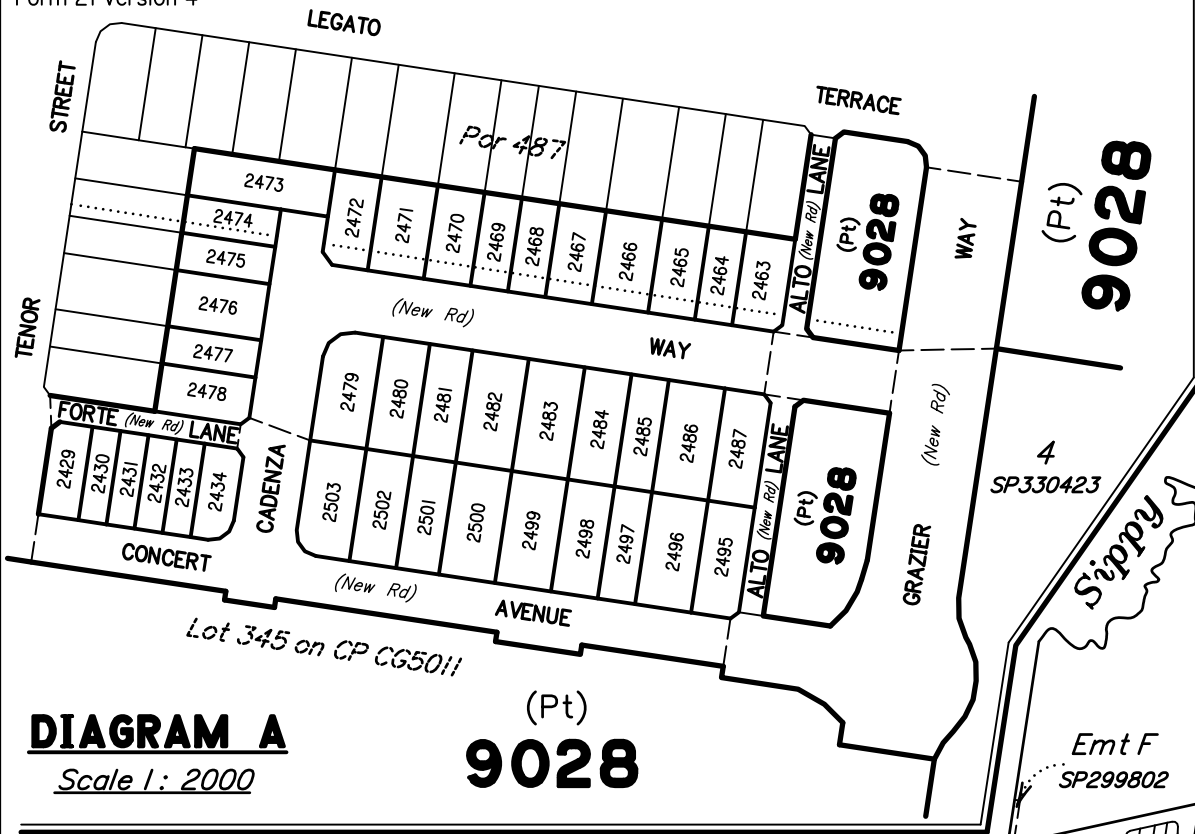


SURVEY PLAN

*Peg placed at all new corners unless otherwise stated.*

*Original information compiled from SP330417 & SP330429 in the Department of Resources.*

*For Reference Marks, MGA Coordinates & Traverses Tables See Sheet 3.*



**DIAGRAM A**  
Scale 1: 2000

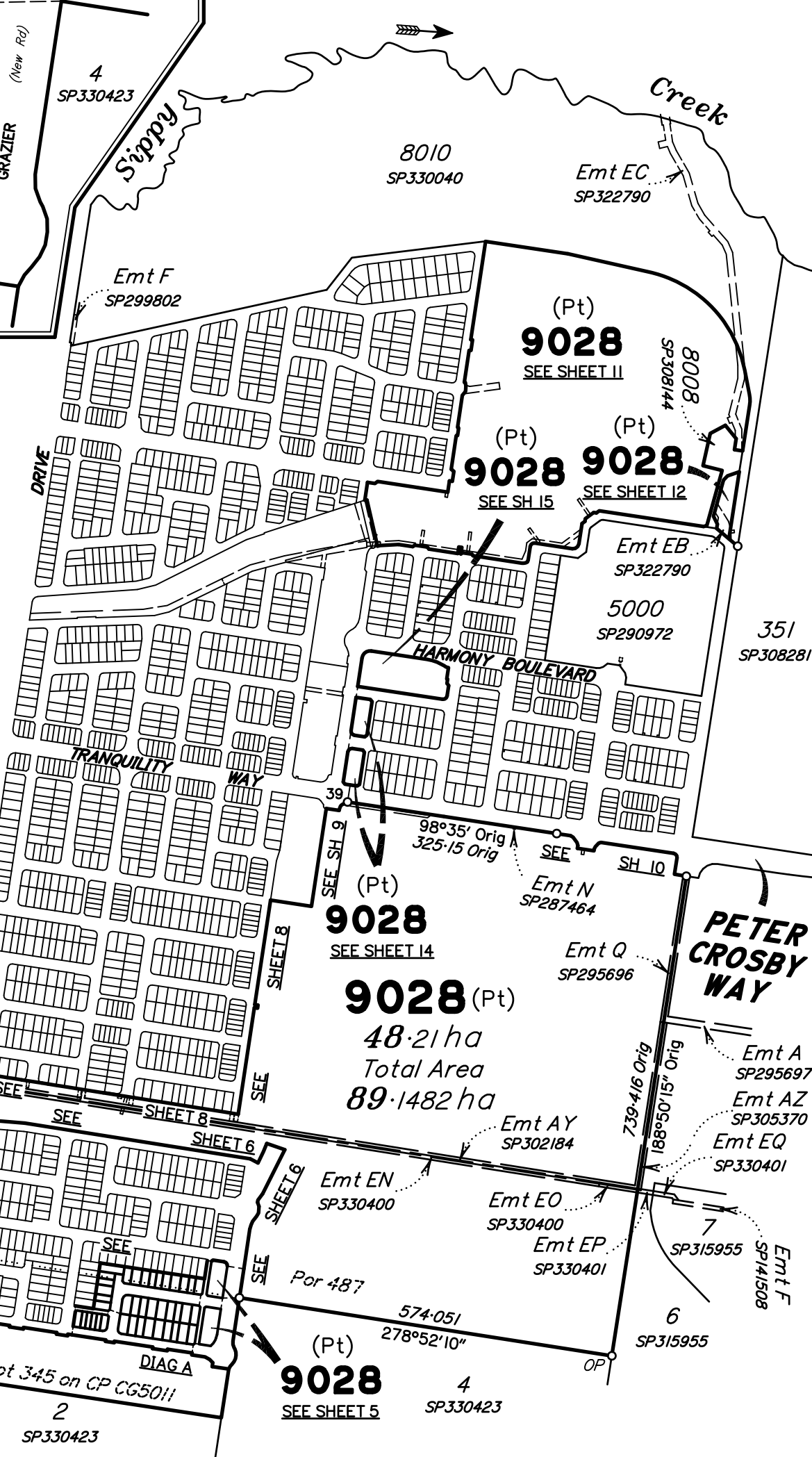
(Pt)  
**9028**

**Total Area of New Road**  
(SEE SHEETS 3-5)..... 1.2335 ha

*For details of Lots 2429-2434 & 2495-2503 See Sheet 3.*

*For details of Lots 2463-2487 See Sheet 4.*

ADDITIONAL REFERENCE MARKS  
TO BE PLACED FOLLOWING ROAD  
CONSTRUCTION (SEE IS311095).



Emt D  
SP125360

Emt BT  
SP306953

Emt CH  
SP309507

8015  
SP317097

Emt DB  
SP317097

354°33' Orig  
124.633 Orig

**9028 (Pt)**  
17.33 ha

400.661 Orig  
278°52'10" Orig

SP330423

(Pt)  
**9028**

SEE SHEET 16

Lot 345 on CP CG5011

2  
SP330423

86°38'25" Orig  
266.463 Orig

Emt BS  
SP306953

8002  
SP317080

176°38'25" Orig  
316.64 Orig

Emt CJ  
SP309507

SEE

SEE

SEE

SEE

SEE

SEE

SEE

SEE

SEE

SEE

SEE

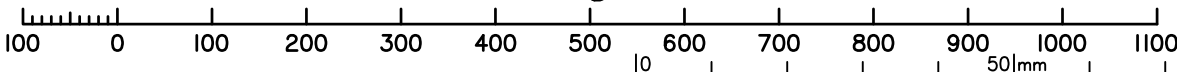
SEE

SEE

SEE

SEE

Scale 1:8000 - Lengths are in Metres.



RPS Australia East Pty Ltd (ACN 140 292 762) hereby certify that the land comprised in this plan was surveyed by the corporation, by Zachary Edward CRISPE, Surveying Associate, for whose work the corporation accepts responsibility, under the supervision of Jeremy Matthew SCRIVEN, Cadastral Surveyor and that the plan is accurate, that the said survey was performed in accordance with the Survey and Mapping Infrastructure Act 2003 and Surveyors Act 2003 and associated Regulations and Standards and that the said survey was completed on

.....  
Authorised Delegate

.....  
Date

**Plan of**  
**Lots 2429-2434, 2463-2487,**  
**2495-2503 & 9028**  
Cancelling Lot 9027 on SP330429

LOCAL GOVERNMENT: **SUNSHINE COAST REGIONAL COUNCIL** LOCALITY: **PALMVIEW**

Meridian: **MGA (Zone 56) Vide GNSS**

Survey Records: **No**

Scale: **1:8000**

Format: **STANDARD**

**SP332425**